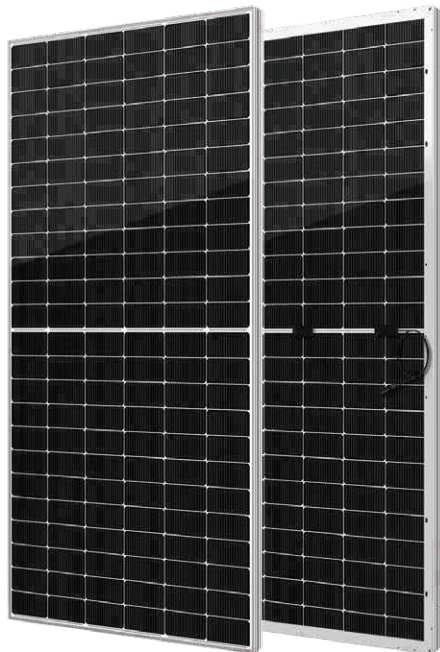


# YUKON N Series

Half-Cell N-Type TOPCon  
Bifacial Module

**565-580Wp** | **22.45%**  
Module Power Output | Max Efficiency



## Key Features



High module conversion efficiency



Better temperature coefficient



Super multi busbar technology



Low attenuation long warranty



Superior load capacity



Higher bifaciality

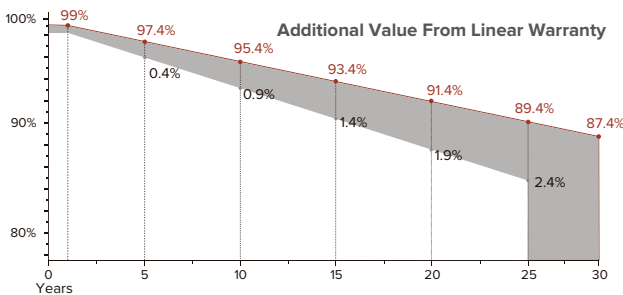


USA based liability insurance



Houston, Texas based company

## Warranty



**15** <Years> Guarantee on product material and workmanship

**30** <Years> Linear power output warranty

## Product Certification

IEC61215:2016; IEC 61730:2016; UL1703; UL61730

IEC62804 PID

IEC61701 Salt Mist

IEC62716 Ammonia Resistance

IEC60068 Dust and Sand

IEC61215 Hailstone

Fire Type (UL61730):Type29

ISO14001:2015; ISO9001:2015; ISO45001:2018



## About SEG Solar

SEG Solar is a leading manufacturer of high-performance solar panels for residential, commercial, and utility applications. The company, headquartered in Houston, Texas, is committed to providing cost-effective and reliable solar solutions that help customers reduce their energy costs and carbon footprint.



Download Datasheet

## Electrical Characteristics

Module Type	SEG-565-BTA-BG			SEG-570-BTA-BG			SEG-575-BTA-BG			SEG-580-BTA-BG		
	Front STC	Front NOCT	Back STC	Front STC	Front NOCT	Back STC	Front STC	Front NOCT	Back STC	Front STC	Front NOCT	Back STC
Maximum Power -Pmp(Wp)	565	425	452	570	429	456	575	433	460	580	437	464
Open Circuit Voltage -Voc(V)	51.50	48.93	51.48	51.70	49.12	51.68	51.90	49.31	51.88	52.10	49.50	52.08
Short Circuit Current -Isc(A)	13.89	11.11	11.11	13.95	11.16	11.16	14.01	11.21	11.21	14.07	11.26	11.26
Maximum Power Voltage -Vmp(V)	42.80	40.22	42.78	43.00	40.44	42.98	43.20	40.63	43.18	43.40	40.86	43.38
Maximum Power Current -Imp(A)	13.21	10.57	10.57	13.26	10.61	10.61	13.32	10.66	10.66	13.37	10.70	10.70
Module Efficiency(%)	21.87			22.07			22.26			22.45		
Power Tolerance	(0, +3%)											
Maximum System Voltage	1500V DC											
Maximum Series Fuse Rating	30 A											

STC: Irradiance 1000 W/m<sup>2</sup> module temperature 25°C AM=1.5

NOCT: Irradiance 800W/m<sup>2</sup> ambient temperature 20°C module temperature 45°C wind speed: 1m/s

## Mechanical Specifications

External Dimension	2278 x 1134 x 30 mm
Weight	32.0 kg
Solar Cells	N-TOPCon 182 x 91mm(144 pcs)
Front /Back Glass	2.0mm AR coating semi-tempered glass / low iron
Frame	Anodized aluminium alloy
Junction Box	IP68 / 3 diodes
Connector Type	PV-CO02-xy
Cable Type	12 AWG PV Wire (UL)
Cable Length	Portrait: 400 mm(+) / 200 mm(-) Landscape: 1200 mm(+) / 1200 mm(-) or customized length
Mechanical Load(Front)	5400 Pa / 113 psf*
Mechanical Load(Rear)	2400 Pa / 50 psf*

\*Refer to SEG installation Manual for details

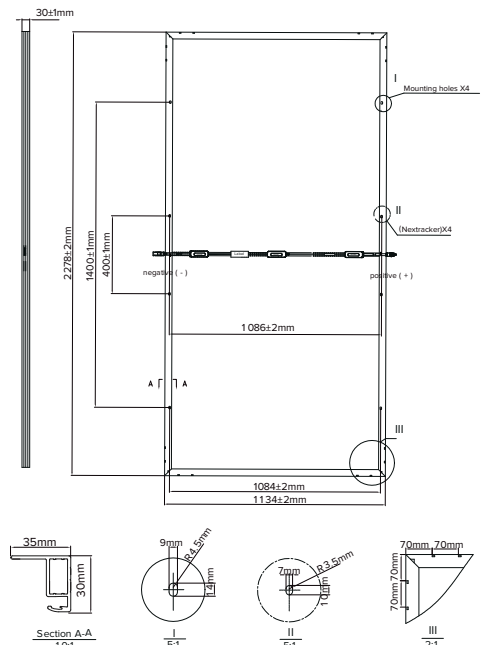
## Packing Configuration

Container	20'GP	40'HQ
Pieces per Pallet	36	36
Pallets per Container	4	20
Pieces per Container	144	720

## Temperature Characteristics

Pax Temperature Coefficient	-0.30 %/°C
Voc Temperature Coefficient	-0.25 %/°C
Isc Temperature Coefficient	+0.046 %/°C
Operating Temperature	-40~+85 °C
Nominal Operating Cell Temperature (NOCT)	45±2 °C

## Technical Drawing



\*Refer to SEG installation Manual for details

## I-V Curve

